

**1 Complete.**



c u r l y h a i r



p o n y t a i l



w a v y h a i r



g l a s s e



s t r a i t h a i r



m o s t a b e a r



b e a r h a i r



b e a r

**2 Look. Then read and match.**



Has she got wavy hair?

No, he hasn't.



Has she got glasses?

Yes, she has.



Has he got a moustache?

No, she hasn't.



Has she got a ponytail?

Yes, he has.



Has he got a beard?

No, she hasn't.



Has he got curly hair?

Yes, she has.

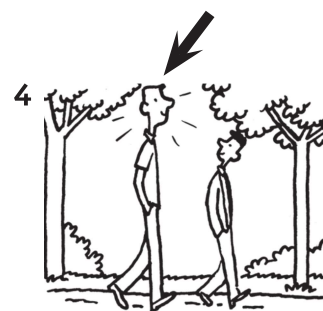
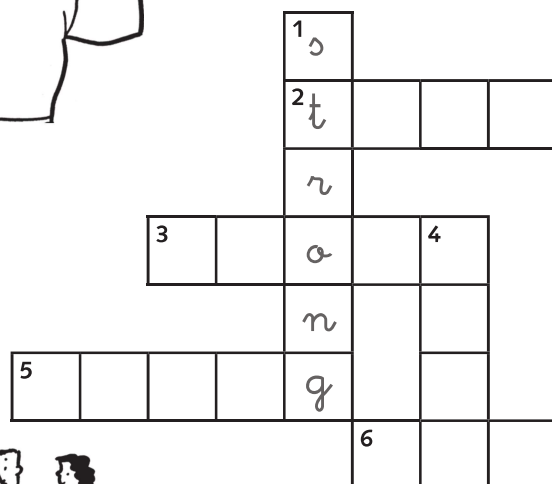


Has she got straight hair?

No, he hasn't.

# 1 Write.

~~strong~~ tall old thin young short



# 2 Write. Then match.

1 old? she Is

Is she old?

Yes, she is.

2 thin? Is he

No, he isn't.

3 Is strong? he

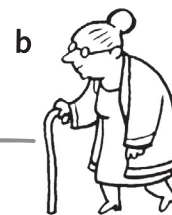
Yes, he is.

4 he young? Is

No, he isn't.

5 she short? Is

Yes, she is.



**1 Write the letter. Then write about Picture D.**

1 He's tall.

He's got a beard.

He hasn't got a moustache.



3 He's old.

He's got curly hair.

He hasn't got glasses.



2 She's small.

She's got blond hair.

She hasn't got a ponytail.



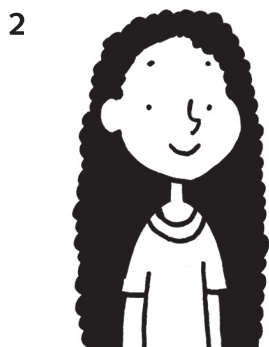
4 She's \_\_\_\_\_

\_\_\_\_\_

\_\_\_\_\_



**2 Look and write.**

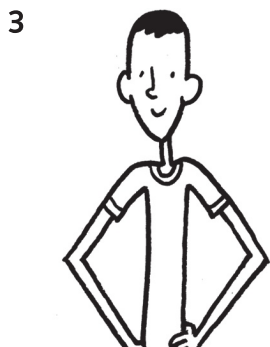


1 Has he got straight hair? No, he hasn't.

Is he young? Yes, he is.

2 Has \_\_\_\_\_ long hair? \_\_\_\_\_

Is \_\_\_\_\_ old? \_\_\_\_\_



3 Has \_\_\_\_\_ glasses? \_\_\_\_\_

Is \_\_\_\_\_ thin? \_\_\_\_\_

4 Has \_\_\_\_\_ glasses? \_\_\_\_\_

Is \_\_\_\_\_ young? \_\_\_\_\_